

# LandSmart® Planning

Kari Wester, Project Manager  
Sonoma Resource Conservation District

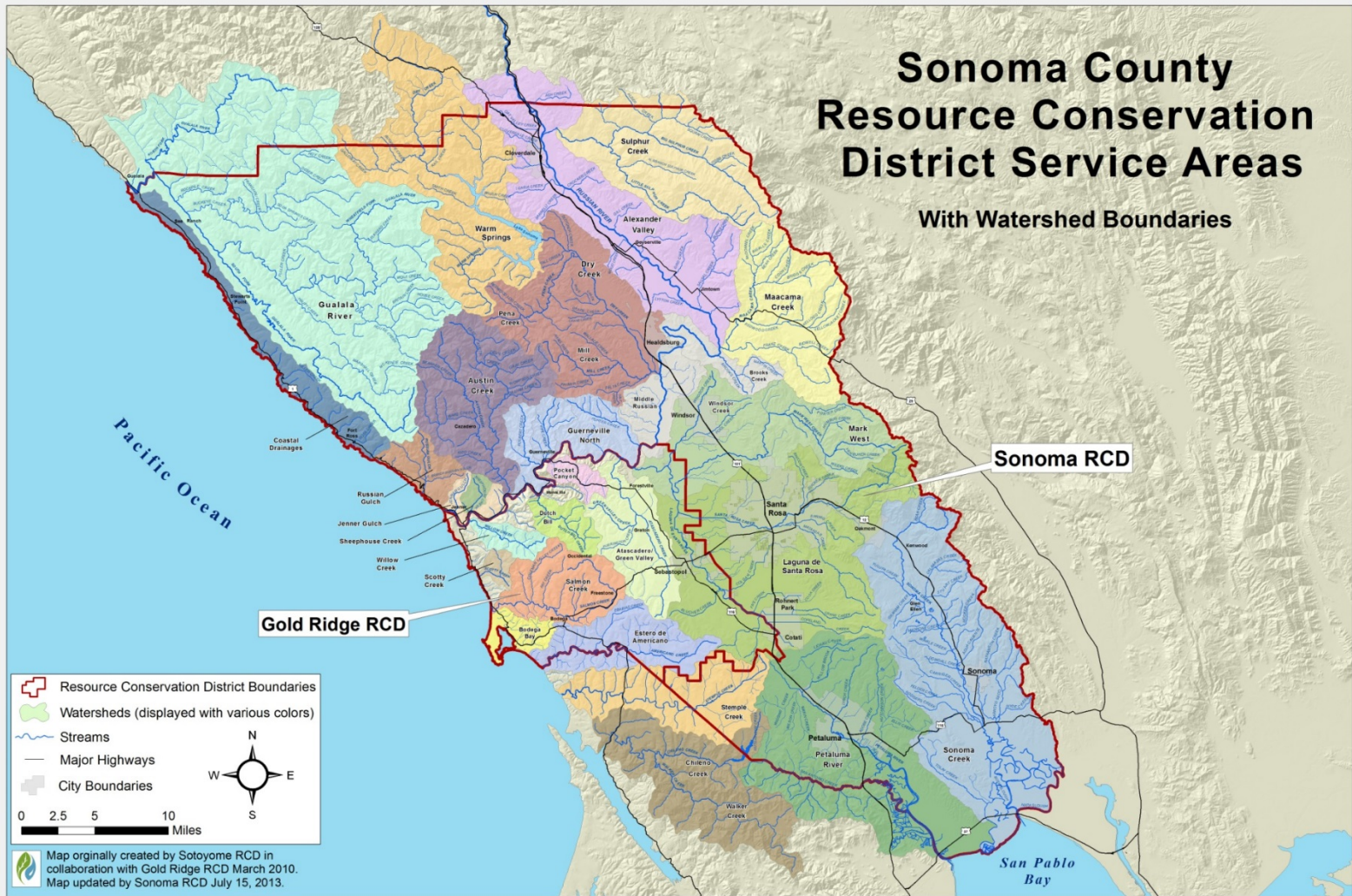


# Who Are We

- Non-regulatory, local, special district
- Assisting landowners with conservation since 1946:
  - Education
  - Technical Assistance
  - Financial Resources
- Majority grant funded (federal, state and local)

# Sonoma County Resource Conservation District Service Areas

With Watershed Boundaries



# Primary Program Areas



- Planning
- On-the-ground
- Water Resources
- Education



# LandSmart Planning Goals



- Help landowners to achieve productive lands and thriving streams.
- Provide landowners/land managers with a working document to record progress and decisions regarding ranch operations and goals.
- Provide another option for compliance with future water quality regulations, if applicable.



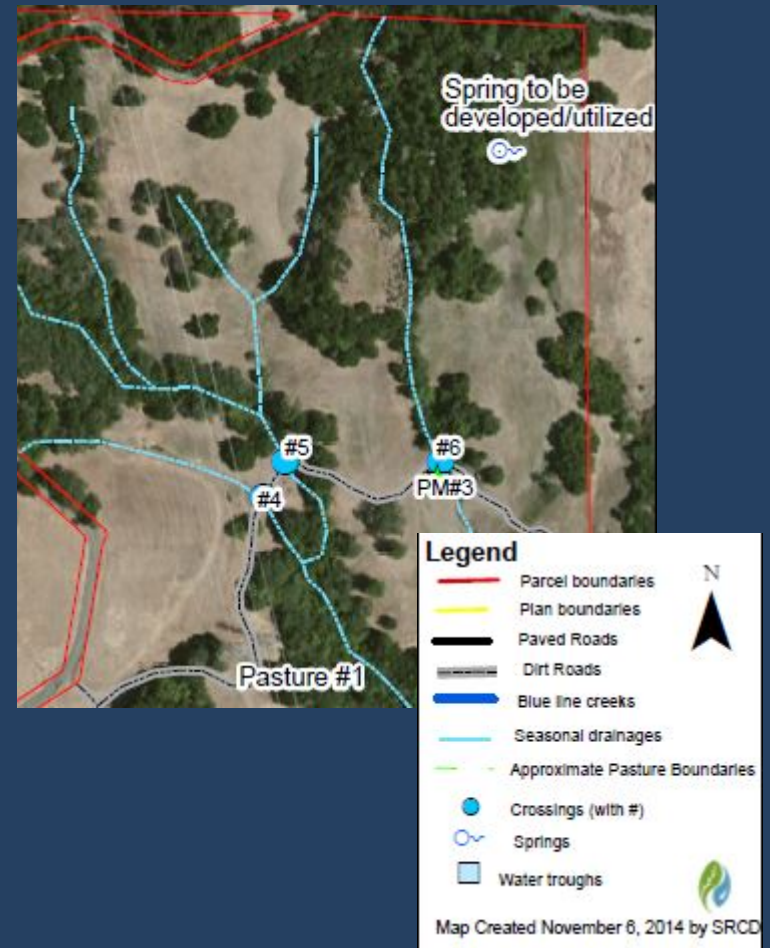
# Types of Land Use Covered by LandSmart® Planning

- Vineyard
- Rangeland
- Confined Animal Facility (Horse, pigs, poultry)
- Orchard (in development)

# LandSmart® Plan Elements

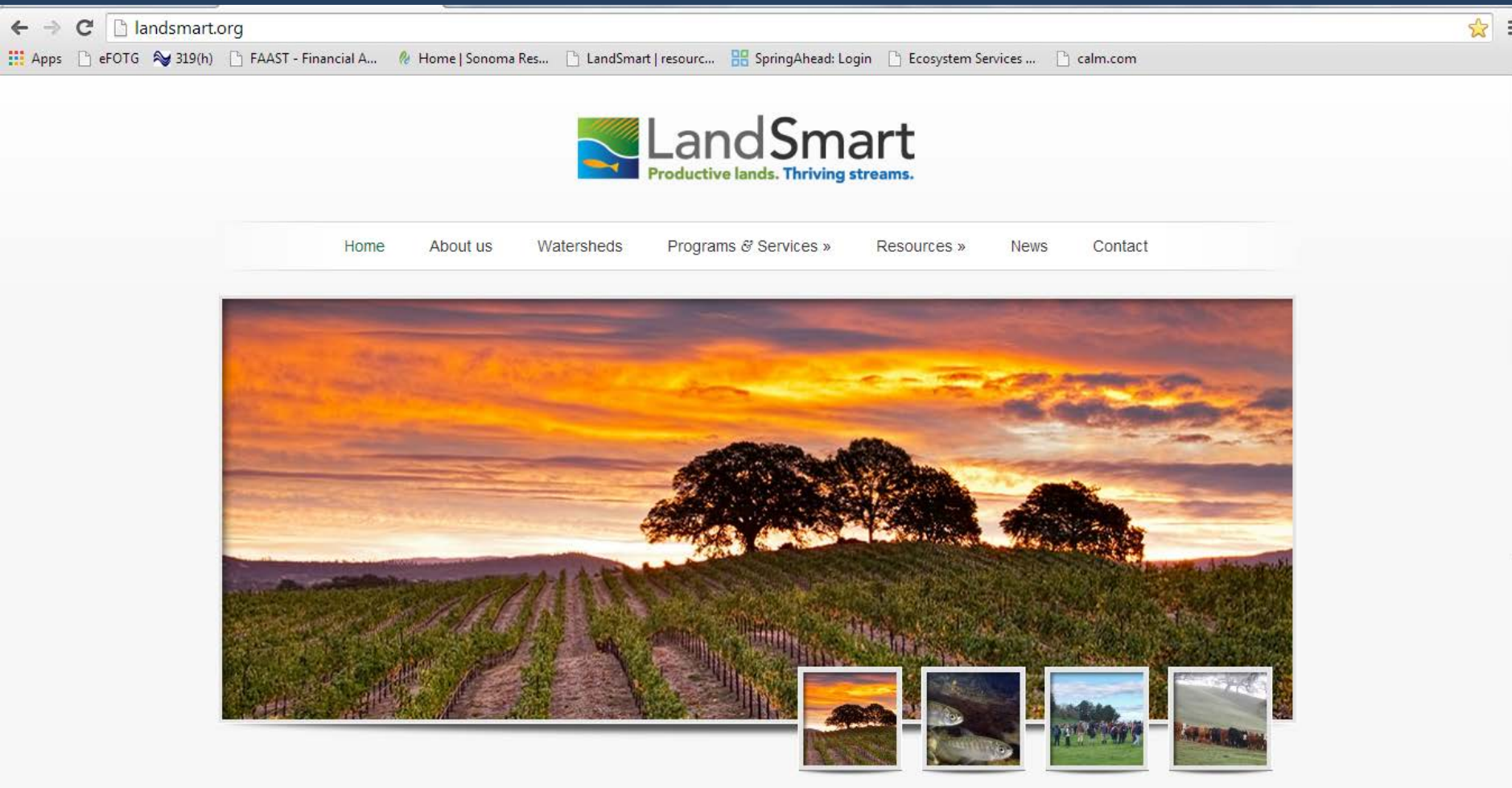
- Map/Property Inventory
- Documentation of existing conditions/operations  
(including roads and on-site riparian areas)
- Identify problem areas and sediment sources or other water quality concerns  
e.g., surface erosion, gullies, landslides, manure contact with water, hydrologic connectivity of roads
- Develop a schedule for implementation of management practices

# Maps





# www.landsmart.org



# Contact information:

