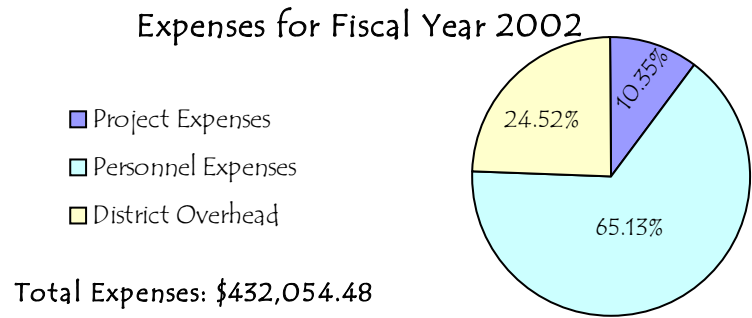
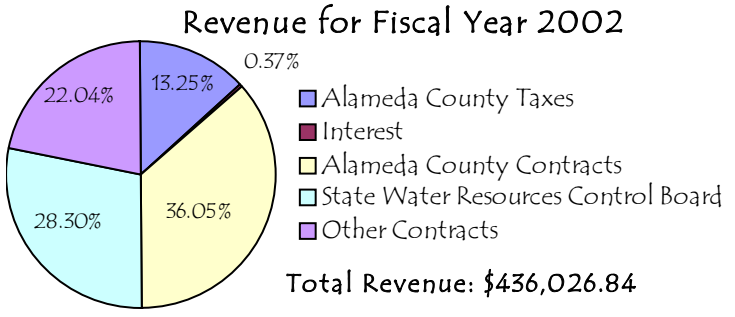


2002 Financial Report



NON-PROFIT ORG
 U. S. Postage
PAID
 Permit No. 77
 Livermore, CA

Alameda County Resource Conservation District
USDA Natural Resources Conservation Service
 1996 Holmes Street — Livermore, CA 94550
 Phone (925) 371-0154 Fax (925) 371-0155
www.baysavers.org

CONSERVATION PARTNERSHIP

Address Service Requested

The Conservation Partnership thanks the organizations that contributed financial and other support to our projects.

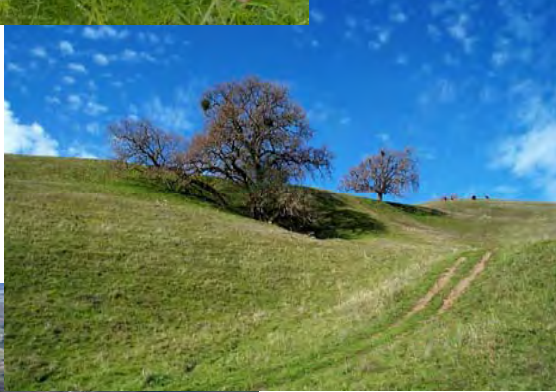
- Alameda County Public Works Agency
- Alameda Countywide Clean Water Program
- California Department of Fish and Game
- Pacific Gas and Electric Company
- National Fish and Wildlife Foundation
- University of California Cooperative Extension
- Castro Valley Unified School District
- U.S. Environmental Protection Agency
- U.S. Fish and Wildlife Service
- San Francisco Bay Regional Water Quality Control Board
- Council of the Bay Area RCDs
- Tri-Valley Business Council
- California Department of Forestry

Partnership Perspectives



2002 Annual Report

Alameda County Resource Conservation District



USDA Natural Resources Conservation Service

Alameda County Resource Conservation District provides leadership in the County and region about natural resources conservation and agricultural issues (the working landscape) through education, outreach, resource services, partnerships and funding.

Board of Directors

Recognized as an independant special district on May 9, 1972 under Division 9 of the California Public Resources Code, the Alameda County Resource Conservation District serves as a vehicle for conservation within its 363,366 acres boundary in Alameda County. The Board of Directors represents the diverse group of interests present in Alameda County. The Board includes 2 ranchers, 1 farmer rancher, 1 watershed planner and 1 recreation representative. The Board plans, directs and sets policy, establishes priorities and guides the implementation of Resouce Conservation District programs.

Board meetings are held on the second Tuesday of each month. All are welcome. Call our office for information.

2002 Board Members

- Loree Cornwell, President
- Rod Tripp, Vice President
- Virginia Coelho, Treasurer
- Norman Marciel
- Jocelyn Combs

Alameda County Resource Conservation District Staff

| | |
|--------------------|---|
| Ron Harben | Executive Officer |
| Amy Evans | Resource Conservationist/Bay Savers Coordinator |
| Karen Sweet | Legislative Outreach Coordinator |
| Lorraine Sheatsley | Bookeeper |
| Erin Winter | Financial Manager |
| Josh Medjav | Watershed Coordinator |
| Gretchen Heckmann | Watershed Coordinator |
| Jackie Shick | Bay Savers Assistant Coordinator |

USDA Natural Resources Conservation Service Staff

| | |
|----------------|--------------------------|
| Terry Huff | District Conservationist |
| Amy Bastone | Environmental Engineer |
| Emmett Cartier | Conservation Planner |
| Jackie Shick | Ecologist |

Alameda County Conservation Partnership Projects

Bay Savers Program

San Francisco Bay Savers is a program designed to teach 4th graders throughout Alameda County the importance of preventing storm water pollution. During the 2001-2002 school year, a total of 225 workshops were presented at 75 schools and 106 storm drains were stenciled. The ongoing T-shirt design contest was a great success with 115 classes participating. Bay Savers presenters added a new activity to the curriculum called Pollution Detectives. The schoolyard litter clean up was popular with students and encouraged them to take responsibility for their local environment.



Bay Savers Watershed Field Trips

ACRCD staff produced an "In and Around My Watershed" tour with listings of places to go to see creeks, wetlands and Bay shoreline habitats that was incorporated into the watershed maps in the Bay Savers Activities Booklets. Three fourth grade groups that had participated in the Bay Savers program were chosen to tour their watershed in the spring of 2002. A team of 'watershed experts' (ACRCD and NRCs staff) led the trips and used interactive lessons to explore the natural resources of the areas. The main goal of the watershed field trip was to take the Bay Savers program beyond the classroom to help foster a greater appreciation for the watershed. The tours included stops at parks, wildlife refuges and other publicly accessible areas that allow students to study and to enjoy creeks, lakes,



San Lorenzo Creek Watershed Project

San Lorenzo Creek Watershed consists of land in Castro Valley, Hayward and San Lorenzo. In 2000, Alameda County Public Works Agency received a 319(h) grant from the Regional Water Quality Control Board and the Environmental Protection Agency to fund three demonstration sites and outreach and education throughout the watershed. Each site will feature soil bioengineering techniques which use rocks, soil and native plants to resolve erosion problems. Our recent focus has been at the Palomares Elementary School.



Palomares Creek Restoration Project

Palomares School teachers worked to expand their watershed curriculum program. In May 2002, K-5 teachers from Castro Valley Unified School District visited the school for a science curriculum meeting. Gretchen Heckmann led the visitors on a tour of the restoration site and invited the visitors to bring their classes. On April 27, 2002, Partnership staff and



Alameda Countywide Clean Water Program staff organized a creek clean-up for Palomares and San Lorenzo Creeks. Parents, teachers and students

cleared debris from the creek and helped to pull non-native weeds from the restoration area. In San Lorenzo Creek, volunteers from around Hayward cleared trash from the creek and stream bank. Palomares students continue to work with Partnership staff to restore their creek through revegetation efforts and tending their new gardens. The gardens were installed by parent volunteers, students and teachers. They feature an organic vegetable and herb garden and a beneficial insect native plant garden. They use the gardens to learn about native plants, soil characteristics and the importance of not using pesticides and herbicides in their gardens.



District Commitment to Agriculture

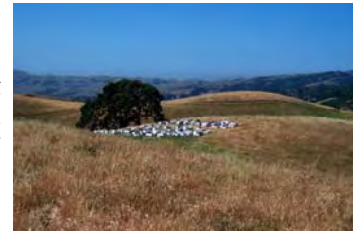
The ACRCD Board of Directors strengthened its commitment to agriculture in its mission statement and annual work plan. Specific programs include the Agriculture Enhancement Plan



Implementation, support of agricultural education, and balancing agricultural projects with other natural resources projects. In addition, the District provides leadership to the San Francisco Bay Resources Conservation and Development (RC&D) that provides leadership in equine facility management for clean

Agriculture Enhancement Plan Implementation

The special appropriations received by the ACRCD to implement Vision 2010's Agriculture Enhancement Plan became effective in May, 2002. Congresswoman Tauscher is responsible for this earmark, which is appreciated. It primarily provides for Karen Sweet to collaborate with Vision 2010 and other partners to implement enterprise and agricultural Collaborative projects include the Agricultural Water Task Force, the Equine permitting study, land conservation projects, workshops for agriculturalists, field tours, and a brochure to explain the working landscape. Karen provides agricultural expertise and liaison to other organizations, such as Alameda County's General Plan committee, Agriculture Advisory Committees, Alameda Creek Watershed Management Plan Committee, Livermore General Plan Review committee, Bay Area Open Space Council, and California Legacy Project.



Equine Facilities Program

The 2002 ACRCD Equine Facilities Assistance Program helps educate facility owners and managers about cost-effective conservation practices that can reduce the potential impacts of horse keeping on natural resources through application of conservation practices, proper land management and stewardship.



Manure Management 319(h) Grant Project

Working with three other RCD's in the Council of Bay Area RCDs and the USDA NRCS, ACRCD will demonstrate effective manure management systems and provide education to the equestrian community. Funding is granted by the State Water Resources Control Board and matching funds are provided by Alameda County Public Works Agency and the demonstration site landowners.

Land Management for Clean Water at Horse Facilities Workshops

This series of four educational workshops was held in January 2002 for equine facility owners and managers. Topics included: *Why and How to Make Your Equine Facility Environmentally Friendly, Cost-Effective Conservation Practices and Manure Management*. Facility owners were given individual assistance to develop water quality management plans for their properties. Funding was provided by Alameda County Public Works Agency and EPA 319(h) grant.



Our Equine Facilities Fact Sheets as well as other program details are now available on our web site: www.baysavers.org