

Questions and Answers from Contractors

Q: How will the District provide compensation if bedrock (or large rock, say greater than 4 feet) requires removal in order to: reach rough grade, embed the rock per C501, and/or install of the footings and wing walls for the bridge?

A: Bedrock is known to be present on site and is visually obvious. Two borings were done and are described in the geotech report, along with geotech recommendations, that is available on the RFP site. Contractor should account for excavation and removal of bedrock in his/her bid.

Large rock greater than 4' diameter is not anticipated and will not require removal. If encountered in stream bed, we'd leave in place and work around it. In the unlikely event that Engineer directs Contractor to remove large rock over 4' diameter, it would be considered extra work.

Q: For safe access to the lower reach, may the contractor remove the cluster of bays immediately above the #4 shown on Sheet C101 and the tree that is in line with #4 and the bay cluster near the road? May the contractor remove branches from trees other than those marked for removal? To facilitate access, may the contractor remove the mound of dirt at the roadside?

A: The trees identified on the revised Sheet C101 may be removed or trimmed. If additional trimming or removal is considered is necessary it must be approved by the Engineer.

Contractor may remove dirt mound for construction access and replace/compact at completion of PM 8.75 work.

Q: Detail 3/C106 (Sheet C108) shows the abutment supported as a spread footing on unconsolidated material, whereas Detail 1/C107 (Sheet S501) shows the abutment dowelled into bedrock. Which scenario should we anticipate and include in the bid?

A: The abutment will be doweled into bedrock.

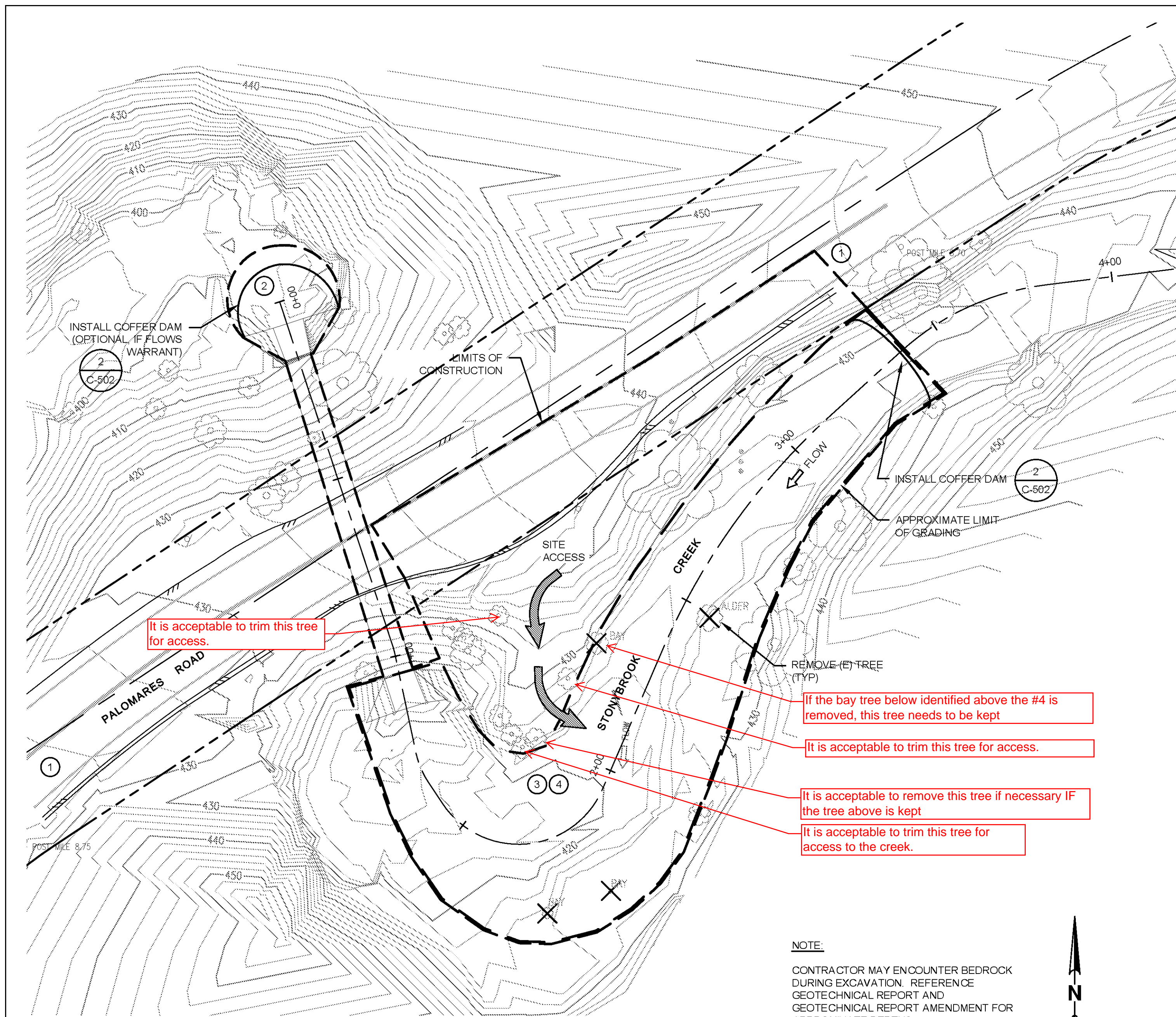
Q: On Page 23, of the Special Provisions, Notice to Contractors, and Proposal, it is noted, "(Proposal – Do Not Detach)". Does this mean we are required to submit the entire spec book of 90 pages on bid day?

If not, would you please provide a list of the required bid documents for bid day submission.

A: Please reference Section 2 of the Special Provisions for the Proposal Requirements and Conditions for which bid documents are required for bid day submittal.

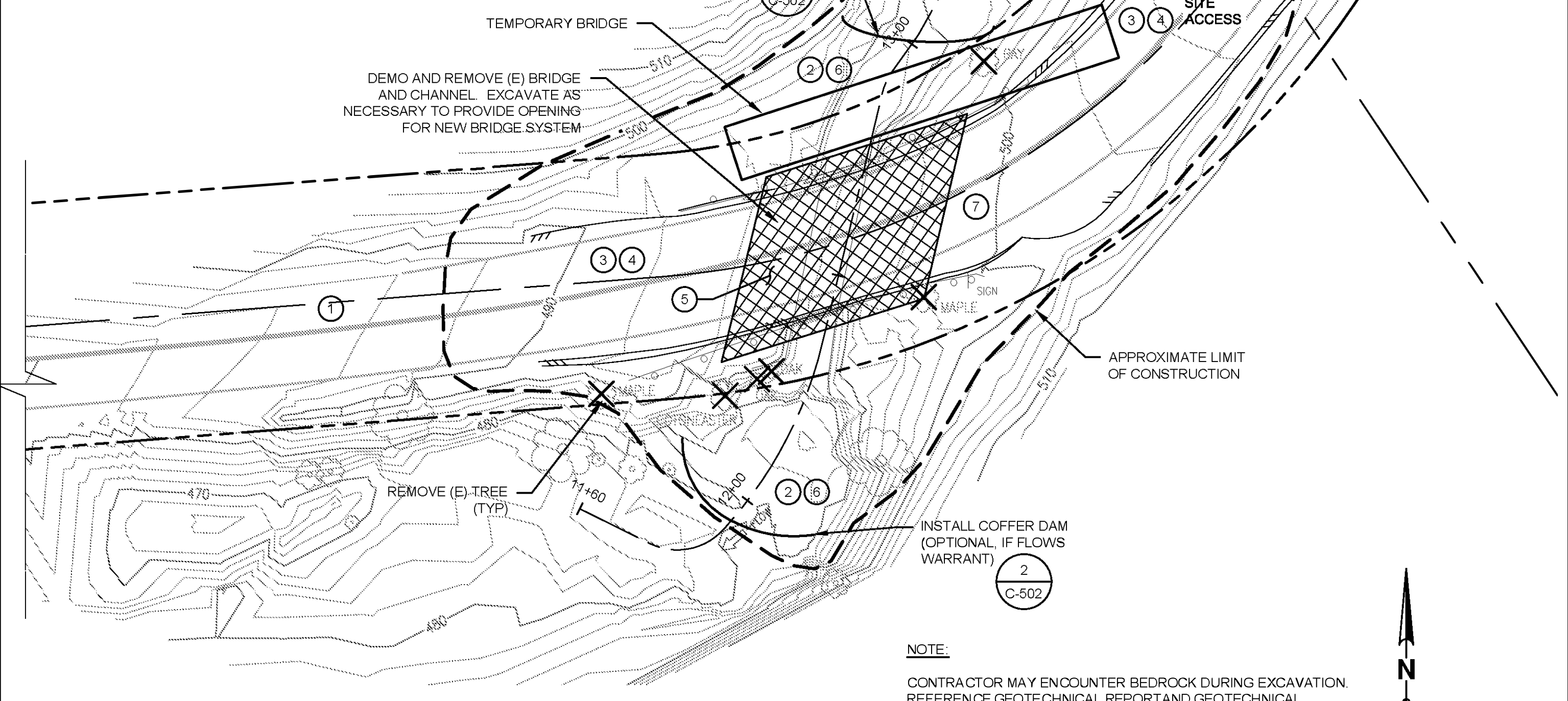
The following pages from the Special Provisions, Notice to Contractors, and Proposal are required for submission in order to meet the requirements included in Section 2 of the Special Provisions:

1. Pages 23-43: Proposal
2. Use revised Bid Schedule emailed on 3/10/15



DEMOLITION PLAN AND CONSTRUCTION SEQUENCING - POST MILE 8.75

Tree Removal Plan	
Only trees to be removed are included in this table. Trees will be clearly flagged in the field for removal, only flagged trees will be impacted as part of the construction project.	
Common Name	Location
Upstream MP 8.60	
California bay laurel	To be removed to install temporary bridge
Downstream MP 8.60	
Big leaf maple	At road edge, east side of new bridge install
Parney's cotoneaster	At road edge, west of new bridge install, clustered with two other trees
Coast live oak	At road edge, west of new bridge install, clustered with two other trees
Coast live oak	At road edge, west of new bridge install, clustered with two other trees
Big leaf maple	At road edge, downstream of bridge, western most tree to be removed at MP 8.60
Upstream MP 8.75	
California bay laurel	Along stream corridor, western most tree to be removed at MP 8.75
White alder	With in stream corridor, eastern most tree to be removed at MP 8.75
California bay laurel	Within stream corridor, southern most end of the limits of construction at MP 8.75
California bay laurel	With in stream corridor, southern most end of the limits of construction at MP 8.75



DEMOLITION PLAN AND CONSTRUCTION SEQUENCING - POST MILE 8.60

CONSTRUCTION WORK SEQUENCE

1. TRAFFIC CONTROL SIGNAGE, BARRICADES, AND MOBILIZATION.
2. INSTALL FISH SCREENS, DIVERSION PIPE, AND COFFER DAM IN ACCORDANCE WITH DIRECTION FROM THE RCD BIOLOGIST. CONTRACTOR TO COORDINATE DEWATERING WITH BIOLOGIST TO REMOVE FISH AND DEWATER.
3. BEGIN CHANNEL WORK PREPARATION, DEMOLITION, AND EXCAVATION. REFINISH CONCRETE ON CULVERT BOTTOM AND INSTALL BAFFLES IN CULVERT. WORK SHALL THEN PROCEED UPSTREAM FROM THE CULVERT TO THE ACCESS AREA, AND THEN FROM UPSTREAM TO DOWNSTREAM TO THE ACCESS AREA.
4. SET BOULDERS AND FINISH GRADING. ONCE BOULDERS ARE RESET, EQUIPMENT MAY NOT DRIVE OVER THEM.
5. DEMOBILIZATION.

CONSTRUCTION WORK SEQUENCE

1. TRAFFIC CONTROL SIGNAGE, BARRICADES, AND MOBILIZATION
2. INSTALL FISH SCREENS, DIVERSION PIPE, AND COFFER DAM IN ACCORDANCE WITH DIRECTION FROM THE RCD BIOLOGIST. CONTRACTOR TO COORDINATE DEWATERING WITH BIOLOGIST TO REMOVE FISH AND DEWATER.
3. PREPARE ROADWAY FOR INSTALLATION OF TEMPORARY BYPASS BRIDGE.
4. INSTALL TEMPORARY BYPASS BRIDGE.
5. EXCAVATE, DEMOLISH, AND REMOVE (E) BRIDGE AND CHANNEL.
6. ROUGH GRADE CHANNEL AND INSTALL NEW BRIDGE ABUTMENTS. WORK SHALL THEN PROCEED UPSTREAM FROM THE START OF GRADING TO THE ACCESS AREA. SET BOULDERS AND FINISH GRADING. ONCE BOULDERS ARE RESET, EQUIPMENT MAY NOT DRIVE OVER THEM.
7. SET NEW BRIDGE PLANKS AND FINISH ROADWAY GRADING AND PAVING.
8. DEMOBILIZATION.

100% PROJECT PLANS

Reuse of Documents This document and the ideas and designs incorporated herein, as an instrument of professional service, is the property of GHD Inc. and shall not be reused in whole or in part for any other project without GHD Inc.'s written authorization. © GHD Inc. 2012.								Client Alameda County Resource Conservation District Project Stonybrook Creek Crossings and Fish Passage Improvements Title Construction Sequencing and Demolition Plan Contract No. 8410577	
				Drawn SD Designer JL/MM Drafting Check CP Design Check SA Approved (Project Director) SAA Date February 2015		Scale AS SHOWN This Drawing shall not be used for Construction unless Signed and Sealed For Construction.		Original Size Ansi D Drawing No: C-101 Sheet 4 of 20 Rev:	