

East Alameda County Regional Conservation Strategy: A Blueprint for Action

Landowner Outreach Meeting

June 18, 2008

Presentation Outline

- Introductions, Background, and Handouts
- Why a Conservation Strategy?
- What is EACCS?
- Who is Involved (steering committee, user's advisory group, etc)?
- Current Status of EACCS
- Opportunities for Input
- Landowners Discussion on GOALS
- Q and A

Why: The Reason For EACCS

- Piecemeal conservation is less effective
- Negotiations with regulatory agencies occur project-by-project (= not consistent and time consuming)
- Mitigation requirements are unpredictable
- Local jurisdictions have experienced project delays due to endangered species permitting
- Federal and state wildlife agencies urge a *regional approach* to simplify and improve the permit process

Why: The Reasons (cont)

- Only two mitigation banks in the county; want to see more mitigation opportunities in County
- Desire to keep mitigation \$ in the County
- **Support conservation on private lands through mitigation \$ (Partnership)**

What: A Regional Conservation Strategy

- Voluntary program
- Create a regional blueprint for conservation
- Would not result in permits or new land use regulations, but would increase permit certainty and streamline local projects
- Must involve local stakeholders
- Designed to keep mitigation \$ in County

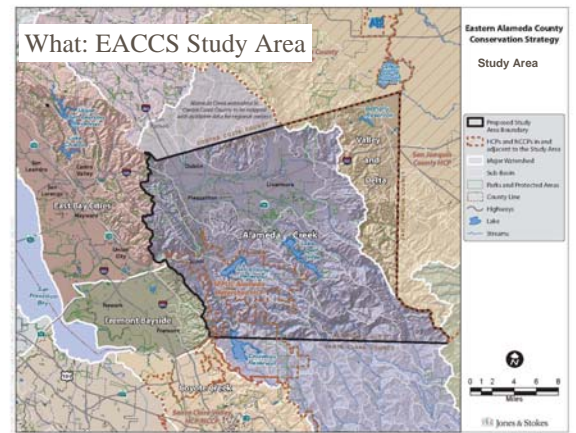
What: A Regional Conservation Strategy

- Plan will
 - Document important biological resources in eastern Alameda County
 - Set regional priorities for mitigation and conservation
 - Include clear standards for local agencies
 - Set mitigation ratios for projects
 - **Develop guidance for streamlining mitigation transactions (Partnership)**
- Wildlife agencies will formally approve plan, providing assurances for those involved

What: A Regional Conservation Strategy

- Estimate 18 months to develop
- Work conducted in 3 phases
- Costs shared equally by 8 agencies
- Additional funding through CALFED grant to Alameda County Conservation Partnership (RCD/NRCS/PLCS)

What: EACCS Study Area



What: Focal Species?

- Most biological issues that arise through the CEQA process are species related
- A large number of threatened, endangered, and/or rare species occur in the County
- ESA and CESA are regulations that focus on species and can be complex to navigate
- Although mitigation occurs at the natural community level it is usually prescribed based on the needs of species

What: Focal Species...



California tiger salamander



Western burrowing owl

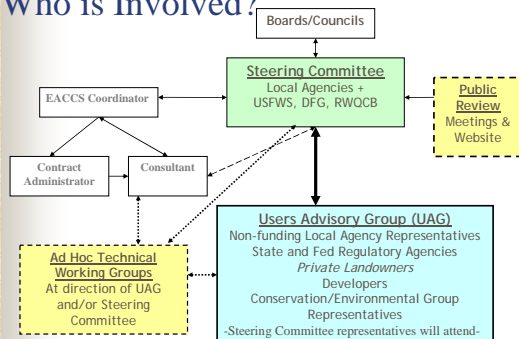


San Joaquin kit fox



California red-legged frog

Who is Involved?



Who: Steering Committee

- Criteria
 - Local agencies with projects that need permits or issue permits (i.e. cities, transportation agencies, water agencies, etc)
 - Willing to share burden of FUNDING
- Role
 - strategic policy, program management, administration
 - review recommendations from UAG and Consultant
 - provide updates to the represented Boards and Councils.

Who: Steering Committee (cont)

- Alameda County
- Alameda County Congestion Management Agency
- **Alameda County Conservation Partnership** (RCD/NRCS/PLCS)
- Alameda County Waste Management Authority
- City of Dublin
- City of Livermore
- City of Pleasanton
- Eastbay Regional Parks District
- Zone 7 Water Agency

Who: Users Advisory Group

- Members applied for positions and represent a broad spectrum of potential users (landowners, reg agencies, developers, conservation groups, etc)
- Technical & non-technical representatives from entities that intend to *use* the strategy
- Assist in the development of the EACCS by **providing technical guidance and review of strategy throughout its development.**

Who: Users Advisory Group (cont)

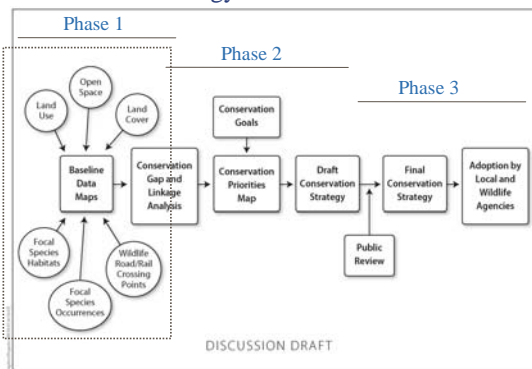
Duties include:

- Regular meeting attendance (monthly)
- Provide comments/recommendations on DRAFT work products for the Steering Committee
- Make sure that your constituency remains informed about the strategy

Current Status

- Senior staff from local jurisdictions (steering committee) have been meeting with wildlife agencies since January 2007 to explore possible solutions
- Decide on Conservation Strategy vs HCP
- Funding Agreements formalized
- Consultant hired
- 3 UAG meetings
- Draft deliverables from Phase 1 in progress
- Developing consultant contract for phases 2 & 3

Current Status: Strategy Phases



Phase 1

- Create Vegetation Community/Habitat Map
- Determine and Map Focal Species
- Compile Land Use and Open Space Data
- Create Uniform Land Use Classification System for Study Area

Future Opportunities for Public Input

- Two “public” meetings are scheduled
 - Phase 2
 - Draft Conservation Strategy
- Additional UAG Landowner Representation?
- Addition UAG Landowner Sponsored Outreach
 - Ad-Hoc Landowner Technical Working Group?

Group Discussion : Conservation Strategy Goals and Issues from a Private Rural Landowner Perspective

Question and Answer Session...

Communications Tools

- Weblink: www.fws.gov/sacramento/eaccs/eaccs.htm
- Alameda County Conservation Partnership
Contact Karen Sweet (RCD), Terry Huff (NRCS) or
Jim Robins
jrobins@alrus-eco.com
510-332-9895
- EACCS Coordinator
Mary Lim
m_lim@zone7water.com
925-454-5036